

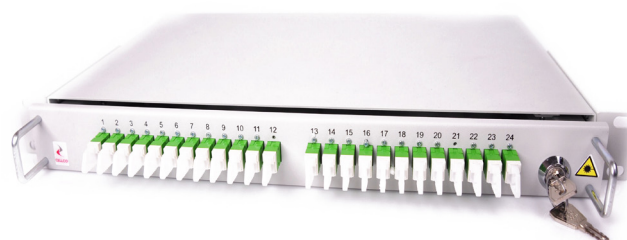
UKN

1U, 2U, 3U patchpanel

DESCRIPTION

Cellco has invented and released the new UKN Patchpanel with a sliding drawer (with telescopes) which gives easy reconfiguration and access to splice cassettes and pigtails. UKN model provides protected access to a detachable front panel. Adjustable mounting brackets allow the panel to be mounted in 19" rack system.

Cellco UKN patchpanels are compliant with TP S.A. (Polish Telecommunication) and Netia S.A. standards.

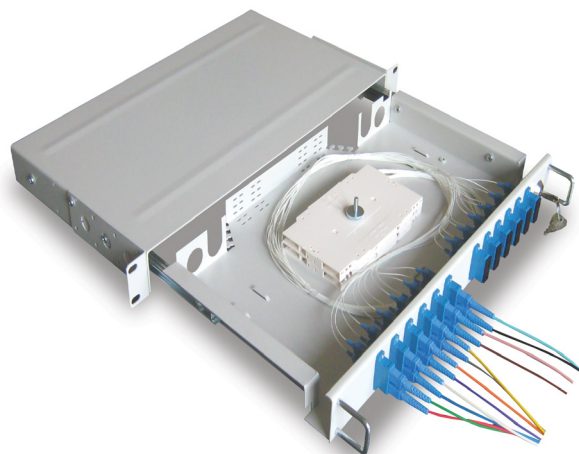


Example of UKN 1U patchpanel

TECHNICAL DATA FOR

UKN 1U

	UKN 1U
Max. quantity of splices	48
Max. quantity of splice cassettes	4
Capacity	12 SC/E2000/ST/FC SX, 12 LC DX 12 SC DX 24 SC/E2000/ST/FC SX, 24 LC DX 24 SC DX
Quantity of linear cable ports	4
Color	powder RAL 7035 or RAL 9005 painted
Dimensions	1U x 19" x 256mm
Weight [kg]	~ 4,2
Material	Steel DC01

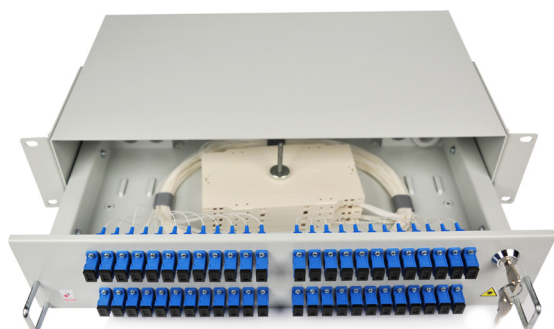


Examples of equipped UKN 1U

TECHNICAL DATA FOR

UKN 2U

	UKN 2U
Max. quantity of splices	96
Max. quantity of splice cassettes	8
Capacity	24 SC DX 48 SC/E2000/ST/FC SX, 48 LC DX 72 SC/E2000/ST/FC SX, 96 SC/E2000 SX,
Quantity of linear cable ports	4
Color	powder RAL 7035 or RAL 9005 painted
Dimensions	2U x 19" x 256mm
Weight [kg]	~ 4,8
Material	Steel DC01

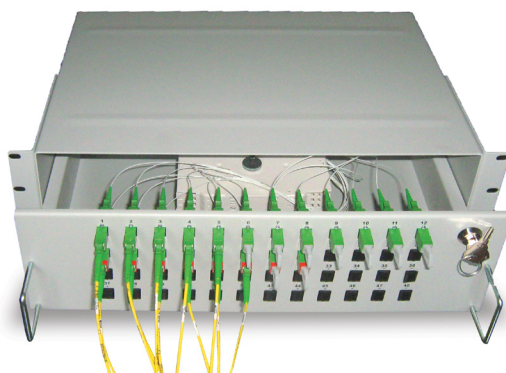


Example of equipped UKN 2U

TECHNICAL DATA FOR

UKN 3U

	UKN 3U
Max. quantity of splices	144
Max. quantity of splice cassettes	12
Capacity	72 SC DX 96 SC/E2000 SX, 144 SC/E2000 SX,
Quantity of linear cable ports	4
Color	powder RAL 7035 or RAL 9005 painted
Dimensions	3U x 19" x 283mm
Weight [kg]	~ 6,0
Material	Steel DC01



Example of equipped UKN 3U

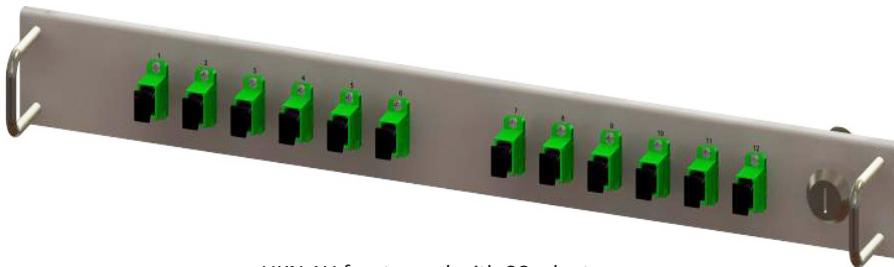
EXAMPLE OF UKN 1U FRONT ADAPTER PANELS



UKN 1U front panel with E2000 adapters



UKN 1U front panel with LC DX adapters



UKN 1U front panel with SC adapters



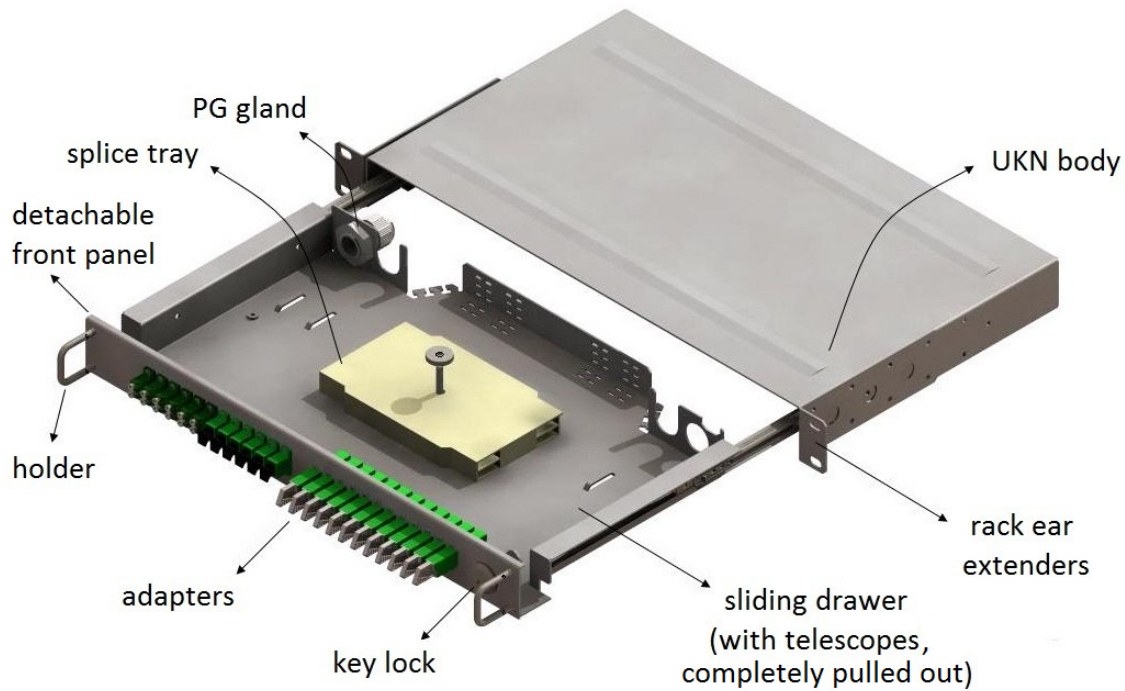
UKN 1U front panel with ST adapters



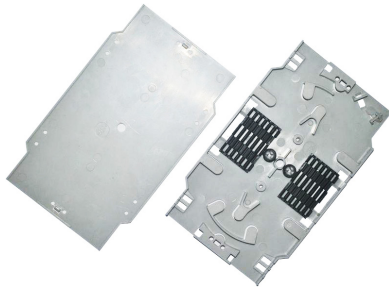
UKN 1U front panel with FC adapters

For more information please contact our sales department.

UKN ASSEMBLIES AND ACCESSORIES



Splice tray (optional)



Splice cassette is a part of fiber optic panel. It is used to secure splices through putting them in protective cover into splice cassette. Standard splice cassette for 19" rack mount panel offered by Cellco may hold up to 12 splices.

PG glands - different sizes (optional)



PG glands are elements which make easier assembling fiber optic cables and organising pigtailed. They features are: water tight, good strain relief, wide clamping range, multi-purpose applications, easy handling.

Key lock



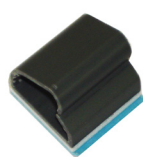
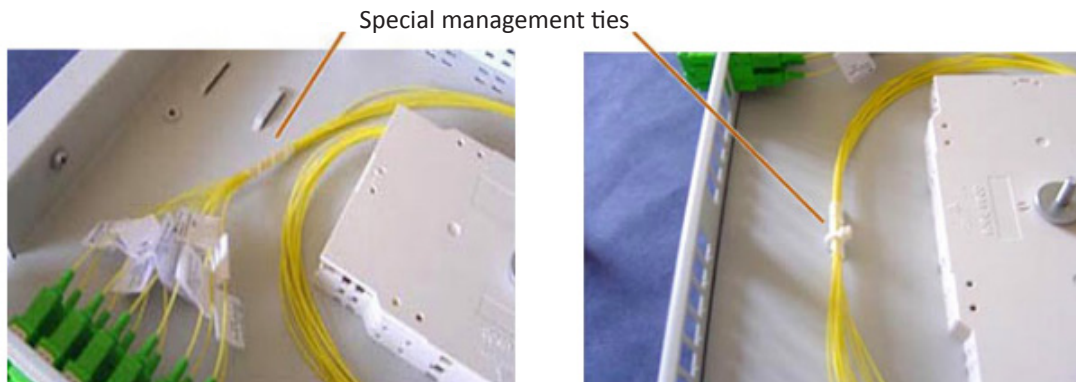
Key lock increases the security access to the patchpanel.

Rack bolt kit (optional)



The kit allows mounting patchpanel in 19" rack system.

Cable ties and pigtail organizers (optional)



Self-adhesive cable clip (latched and unlatched)

Special clips help to organize and route cables. They obtain adhesive backing sticks. Latching design allows easy cable changing.

For more information about UKN accessories please contact our sales department.

FEATURES

Max 144 ways (72 SC DX) 3UKN
 Max 96 way (48 SC duplex) 2UKN
 Max 48 way (24 SC duplex) 1UKN
 Key locker for access protection
 Cable ties for pigtails
 SC, FC, E2000, ST, LC, LC DX, MTRJ adapters possible
 Ports numbered for identification
 Protected access to front panel
 4 gland holes at rear (for cable access)
 2 additional angled access at rear with easy mounting solution
 Fiber bend radius control provided (3,5")
 Pre-wired factory terminated available
 The rear allows 4xPG gland access and 2 angled for easy access

APPLICATION

WAN, LAN, CATV
 Internet providers
 Energetics

ORDERING EXAMPLES

G-PP-UKN-12SC-FE	UKN 1U patchpanel, 12xSC, fully equipped
G-PP-UKN-12SCDX-FE	UKN 1U patchpanel, 12xSC duplex, fully equipped
G-PP-UKN-24SC-FE	UKN 1U patchpanel, 24xSC, fully equipped
G-PP-UKN-24SCDX-FE	UKN 1U patchpanel, 24xSC duplex, fully equipped
G-PP-UKN-2U-24SCDX-FE	UKN 2U patchpanel, 24xSC duplex, fully equipped
G-PP-UKN-2U-48SC-FE	UKN 2U patchpanel, 48xSC, fully equipped
G-PP-UKN-2U-48SCDX-FE	UKN 2U patchpanel, 48xSC duplex, fully equipped
G-PP-UKN-2U-72SC-FE	UKN 2U patchpanel, 72xSC, fully equipped
G-PP-UKN-2U-96SC-FE	UKN 2U patchpanel, 96xSC, fully equipped
G-PP-UKN-2U-48ST-FE	UKN 2U patchpanel, 48xST, fully equipped
G-PP-UKN-2U-72ST-FE	UKN 2U patchpanel, 72xST, fully equipped
G-PP-UKN-3U-48SC-FE	UKN 3U patchpanel, 48xSC, fully equipped
G-PP-UKN-3U-72SCDX-FE	UKN 3U patchpanel, 72xSC duplex, fully equipped
G-PP-UKN-3U-96SC-FE	UKN 3U patchpanel, 96xSC, fully equipped
G-PP-UKN-3U-144SC-FE	UKN 3U patchpanel, 144xSC, fully equipped